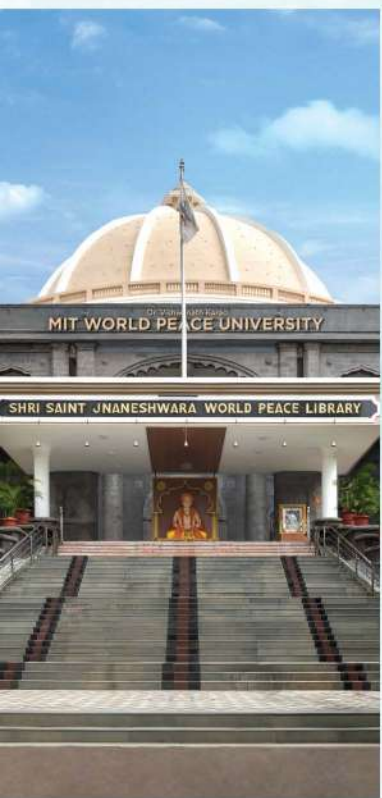


# NEW BEGINNINGS





With the Blessings of  
**Revered Prof. (Dr.) Vishwanath D. Karad**



2022 was full of great memories - be it through meeting our wonderful alumni or through our current, ever-enthusiastic students. While we achieved many a milestone, I always consider a New Year to be a **New Beginning**. No matter the successes and failures you had, the scale sets to zero.

This makes the whole year an opportunity without any burden of the past. No high bar to meet or failure to overturn - you can just focus on putting your best foot forward and I hope that's what we do at MIT-WPU.

With that, I wish greetings of the new year to everyone. May 2023 take you to unprecedented heights but also keep you rooted to the ground. And I would also suggest to make health a priority this year so that you can optimise both your knowledge and your health to power your career.

**SHRI RAHUL V. KARAD**

Managing Trustee and Executive President  
MAEER's MIT Group of Institutions

Executive President  
MIT World Peace University



NEW

# BEGINNINGS

*Another year has passed us by,  
We look back at all we've achieved  
and all we've lost.*

*We remember the highs and the lows,  
The laughter and the tears, and  
through them how we have grown.*

*Now the clock has ticked unto a new  
year,*

*We are reminded of the endless  
possibilities that lie ahead.*

*We have the chance to start anew,  
To set new goals and dream bigger  
dreams.*

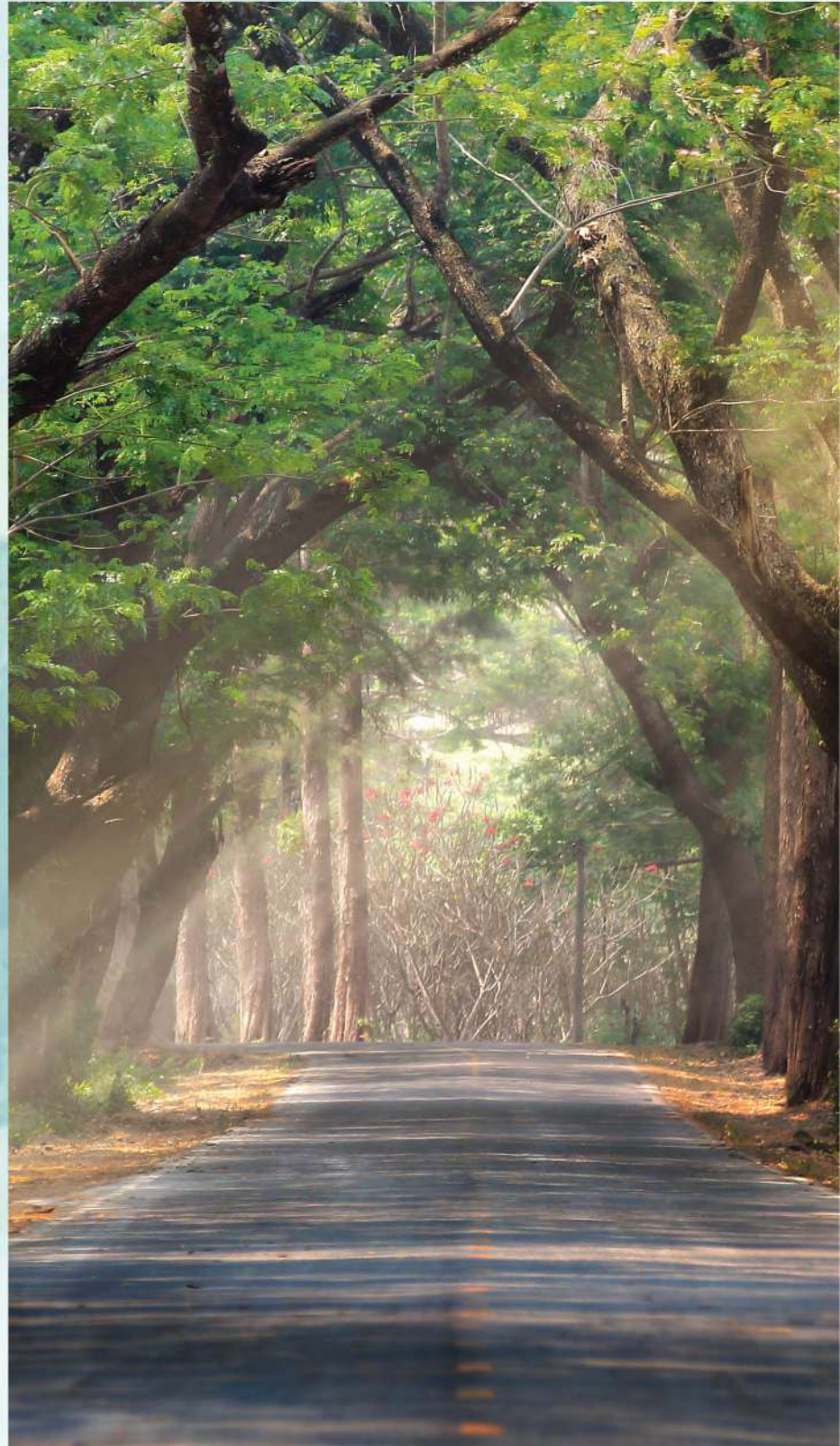
*So let us embrace the fresh start,  
With open hearts and minds.*

*Let us face the unknown with courage  
and grace,*

*As we embark on this journey of  
**new beginnings.***

**VINEETA SHARMA**

Marketing Brand Communication  
MIT-World Peace University







# AMBASSADORS OF SOLIDARITY "EKTA KA PRATEEK"

Recently, MIT-WPU entered into a partnership by signing an MoU with Bharat Diamond Bourse (BDB) - the biggest Diamond exchange market centre in the world.

Every year BDB organizes a Cyclothon activity with an aim to promote the culture of togetherness within their vibrant unit to express their Nationalism, carry a social message and shoulder a CSR activity as well.

These Ambassadors of Solidarity - Ekta Ka Prateek of the Diamond industry decided to cover 500 kms. in 75 hours following the route of Mumbai - Navi Mumbai - Pune - Mumbai.

MIT-WPU decided to add in the spirit of merriment by hosting these cyclists on Day 2 of their journey. With an aim to give them a bit of relaxation from the ride, we arranged for some refreshments. All these cyclists had a good rest while being seated in Tikona Hall on the second floor of Chanakya Building.

The outcome of the Cyclothon is that most of the participants who have their individual organizations from the Diamond Trade and many business owners from SEEPZ, MIDC have shown keen interest in hiring students for Placements and Internships from MIT-WPU.







# ACHIEVEMENTS

We are happy to announce that Ms. Sampada Joshi, M.Ed student of the School of Education, MIT-WPU has been awarded as the Best Performer of the Year 2022-23 and the Best Editor of e-Newsletter in the presence of Honourable Dignitaries and Chief Guests.



**Ms. SAMPADA JOSHI**  
M.Ed Student  
School of Education, MIT-WPU





# CHANGE

Entering a New Year with hope  
Only thing that remains unchanged is change itself!  
Gifting everyone the best of the best things  
Taking memories along.

Just like a caterpillar changes into a beautiful butterfly  
Rising up from hardships as a phoenix  
Have fought many battles of life,  
hoping to emerge as a warrior, after each battle.

Support from family and friends during harsh winter  
Giving thanks to everyone on thanksgiving  
Celebrating festivals and success on the way  
Merry Christmas everyone.

Hoping for a new year filled with happiness  
Hoping to uphold new year resolution longer  
Hoping to conquer new hurdles with success  
Hoping to meet new friends and expand networks

Once again, thanks for the year 2022  
And looking forward to welcoming 2023 with great hope.

**ASST. PROF. KIRAN JOHNSON**

Faculty of Sustainability Studies  
MIT-World Peace University

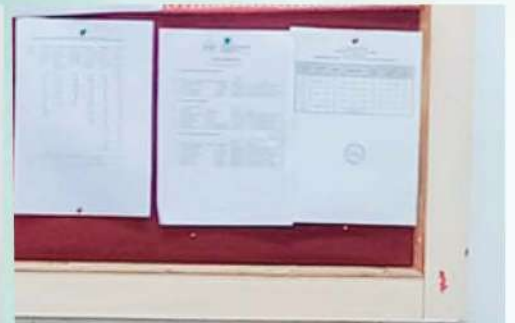






# MENTORING

We were fortunate to have the presence of mentor and Executive Director, Vishwa Shanti Sangh, **Dr. Sanjay Upadhye** to guide the faculty of the Department of Education about mentoring and coaching future teachers. He explained unique ways to reach out to the students with humor and enthusiasm.







# HR & ESTABLISHMENT INSIGHTS 2022

## ***TALENT ACQUISITION SNAPSHOTS***

In the year 2022, we had the pleasure of welcoming 337 new colleagues with MIT-WPU including 133 new faculty members. We appreciate the time contributed by our senior leaders in bringing them all on board.

We welcomed 29 senior leaders who chose MIT-WPU as a partner in their career and are part of our transformational journey.

We sincerely appreciate our colleagues, who continually refer MIT-WPU to their networks. 93 such referrals were onboarded.

In order to make our workforce diverse, we held 17 campus drives from IITs, IIMs, and NITs to get young potential faculty. 59% of new hires were male while 41% were female.

To achieve our goal of 5% international faculty, we partnered with Sci-ROI to onboard international faculties.

## ***NEW INITIATIVES & RECOGNITION***

We got certified as a "**Great Place to Work**" (**GPTW**) as our colleagues participated in the survey conducted by GPTW and displayed their Trust factor (76%).

The institution has maintained its focus on employee welfare - launched a **National Pension System (NPS)** and enhanced Term Insurance Policy for staff (Grade I, II, III) in 2022.

New HR Policy Manual and New Pay Structure based on 7<sup>th</sup> pay commission were launched during the year.

New Rewards and Recognition for Non-Teaching staff as "Employee of the Month" was launched.



# निसर्ग

## जगवा आणि जगा



निसर्गाची किमया कधी समजलीच नाही  
माणसाला त्याची किंमत कधी कळलीच नाही  
माणूस प्रगतीच्या मागे धावत राहिला  
निसर्गाची नासधूस करत राहिला  
ज्याच्या जीवावर आपण जगतोय  
त्या काळ्या आईला संभाळायचेच विसरला  
अभ्यास वाढत गेला आणि  
आईचा आक्रोश शिगेला पोचला  
पण मनुष्य आपल्याच धुंदीत  
तिचा सतत अवमान करत राहिला  
प्रत्येक कृतीला परिणाम असतोच  
अखेर भूमातेचा संयम संपला  
आणि तिने सर्वांना धडा शिकवला  
भरभरून देणारी आई आता कठोर झाली  
तिच्या कुपाने सृष्टी होरपळून निघाली  
आक्रोश ती करत होती की नका ओरबडू मला,  
पण त्याचा परिणाम कोणावरच नव्हता झाला  
यंत्रवत मानव, अवाजवी महत्वाकांक्षा  
यांनी तोही झाला होता अर्धमेला  
आईचे कर्तव्य आईने बजावले  
सगळ्यांना खडबडून जागविले  
अजूनही ती कळवळून सांगतेय  
जागे व्हा आणि ताळ्यावर या  
निसर्गाचा संसार थांबवा  
म्हणजे कृत्रिम निसर्ग भिंतीवर लावण्याची वेळ  
तुमच्यावर येणार नाही

**कल्याणी गोखले**

सहाय्यक ग्रंथपाल, ग्रंथालय विभाग







# EMPLOYEE WELLBEING

## THE POWER OF ONE

925 colleagues participated in the outbound programme and got fantastic experience in the MIT-WPU value immersion programmes.

MIT-WPU has always kept faculty development its focus. 616 faculty members participated in Individual Development Programme (IDP). Capacity building programmes like “Research capability building programme” and “Intellectual Property Rights” were launched. Overall, 1129 individuals attended the MDPs/FDPs with 3828 total cumulative work hours during the year.

## GLIMPSES OF VARIOUS MDPs & FDPs IN 2022





# BHARAT KI BAAT

## CONQUEST OF TORNA

In the 17th Century, Bharat was under the iron clutches of foreign rulers like the Mughals and Adilshahi. The general populace was exploited to the core and was desperate for a savior to come and change their destiny. They found it in the form of Chatrapati Shivaji Maharaj.

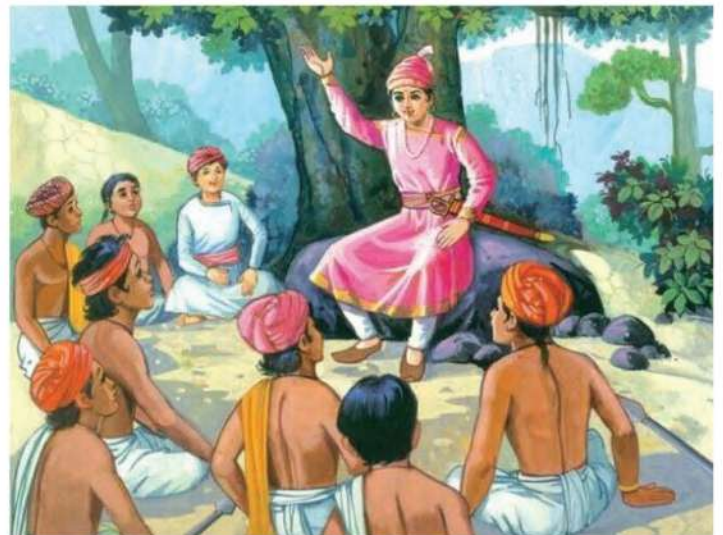
Shivaji Maharaj's mother, Jijabai, always inspired him to free Bharat from the clutches of foreign rule and give a new beginning to the nation. By age 16, young Shivaji equipped himself to establish Swaraj. He began the process with the conquest of Fort Torna.

Torna was a large fort located in the mountain range of Western Ghats and was under the control of Adilshah of Bijapur. Like most forts in the area, Torna was also inadequately garrisoned by the Adilshahi forces. It was the reason why Shivaji Maharaj chose it for the attack.

Shivaji Maharaj started befriending the locals in the Bara Maval region and gathered a force of the local settlers known as Mavals. He also got considerable support from local leaders & was assisted by experienced commanders sent by his father, Shahaji Raje.

On D-day, young Shivaji divided his troops into various groups; entered and attached the fort from multiple sides. The poorly defended fort fell quickly against the brilliantly planned onslaught of the Marathas.

This event of 1646 changed the political scenario of Bharat forever. The victory at Torna manifested itself into an empire that stretched from Atoock in the north to Cuttak in the south of the Indian Sub-continent. Thus a new era began in the history of India. An era of Swarajya!



**Chetan Shirasi**  
Assistant Manager,  
Marketing, MIT-WPU



# EMPLOYEE OF THE MONTH



## GOKUL POMAN

Operation (Events Support)

The dedication with which Gokul Poman has worked for events while also maintaining excellent coordination with his team is remarkable. His experience in strategically planning ahead of time avoids last minute contingencies.

## SONALI KARAD

Examination

Sonali Karad plays an active role in handling multiple projects of the examination department and is an efficient contributor. She is the PhD Defence Exam Coordinator, Students Interdisciplinary Project Coordinator and also COE Office Coordinator. Apart from that she takes care of document maintenance. Also, she has upskilled herself and completed MBA with distinction.



## MAYUR AAKHADE

Admission - DIV III & DIV IV

Mr. Mayur Aakhade is a self-motivated employee and his contribution to the centralized admission process is noteworthy. He has set several digitization processes for admissions during the 2022-23 admission cycle which is appreciable. His work in admissions as well as his behavior with the students is admirable. His contribution towards the implementation of MIT-WPU scholarships & finalization of the student's eligibility work during November & December 2022 is outstanding.

## NEETU UPADHYAY

Marketing (Outreach)

Neetu is highly self-motivated. Working in the Outreach team requires great self-drive. Neetu has displayed consistent performance and has executed 45 Outreach Events in the past 5 months. In November and December (till 20th) alone, she has executed 22 events, some of them at very renowned schools. As a result, the University has started building new school relationships and generated thousands of high-quality leads.





# ONBOARDING @ MIT-WPU - ACADEMICIANS



**Dinesh Seth**  
PROFESSOR & DEAN

Ph.D (Production Engg.)  
Author of a book with a foreward from Nandan Nilekani  
Ex-NITIE (IIT Bombay) Prof for 15 years and overseas 9 years  
Received award twice from Emerald UK for research among others



**Vatsala Sutar**  
ASSISTANT PROFESSOR

M.Arch., Savitribai Phule Pune University  
B.Arch. (Architecture), Visvesvaraya Technological University, Belgaum



**Abhishek Singh**  
ASSISTANT PROFESSOR

Ph.D (Statistics), IIT (ISM) Dhanbad  
M.Sc. (Statistics), Banaras Hindu University  
B.Sc. (Statistics), Banaras Hindu University



**Farha Naz Khan**  
ASSISTANT PROFESSOR

Ph.D (Management), Mohanlal Sukhadia University  
MBA (HR), Mohanlal Sukhadia University, Mumbai  
BBM (Management), MLSU, Udaipur



**Gauri Rahul Dhongade**  
TEACHING ASSOCIATE

M.Sc. (CompSc), Savitribai Phule Pune University  
B.Sc. (CompSc), Shivaji University, Kolhapur



**Ritu Goel**  
ASSISTANT PROFESSOR

MA (Economics)  
BBE (Economics), Delhi University



**Shirish Shrikant Waghmare**  
RESEARCH ASSOCIATE

MSW (Rural Community Development), Shivaji University, Kolhapur  
B.Sc. (Zoology), Shivaji University, Kolhapur





# ONBOARDING @ MIT-WPU - NON-ACADEMICIANS



**Ashwini Charudatta Phadke**  
MANAGER - TALENT ACQUISITION

MPM (HR), Savitribai Phule Pune University  
B.Com. (BE), Savitribai Phule Pune University



**Harbans BirSingh Chauhan (Retd.)**  
CHIEF WARDEN

Master In Physical Education & Sports Management,  
Indian Army  
BA, IGNOU



**Akhil Ajayan**  
ASST. MANAGER - ADMISSIONS (OUTREACH)

PGDM/MBA (Finance and Marketing)  
B.Com. (Finance & Taxation ), MG University



**Pooja Balasaheb Kendre**  
EXECUTIVE - PURCHASE

B.E. (E & TC), Savitribai Phule Pune University



**Ritu Prasad Vanage**  
SENIOR EXECUTIVE - DATA ANALYST

B.Com., Savitribai Phule Pune University



**Ketan Kamalakar Vadke**  
SENIOR MANAGER - ADMISSIONS

B.Sc. (CompSc), Savitribai Phule Pune University







Dr. Vishwanath Karad

**MIT WORLD PEACE  
UNIVERSITY** | PUNE

TECHNOLOGY, RESEARCH, SOCIAL INNOVATION & PARTNERSHIPS